



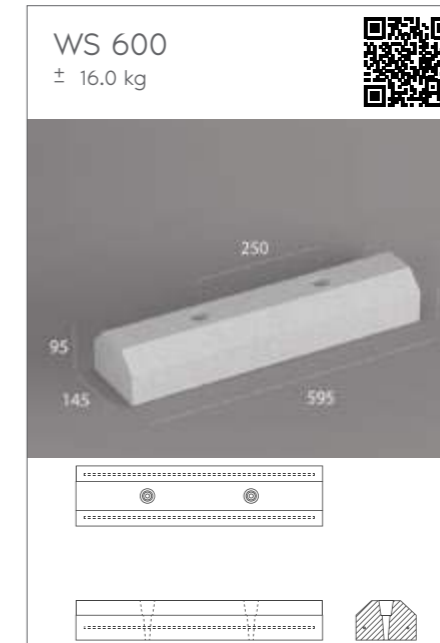
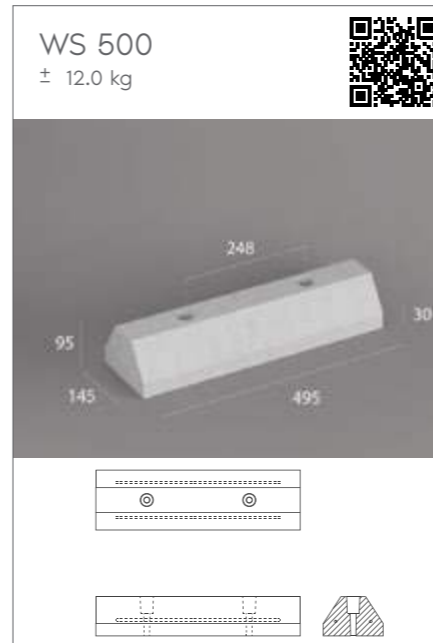
PREMIER BUILDING MATERIAL

PRECAST CONCRETE CIVIL PRODUCT

WHEEL STOPPER | DRAIN COVER | ROAD KERB



www.pbm.my



Contents

PBM Precast Concrete Civil Product

Wheel Stopper	3
Concrete Drain Cover	4
Channel Kerbs & Road Kerbs	5

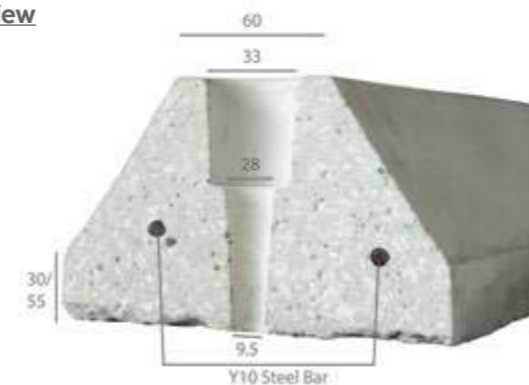
PBM Precast Concrete Wheel Stopper

is designed to enhance parking safety by preventing vehicles from rolling beyond designated parking areas.

These wheel stoppers are made from durable, high-strength concrete and are reinforced with two Y10 steel bars for added strength and stability.

Available in two standard lengths—500 mm and 600 mm—these stoppers are suitable for a variety of vehicle sizes and parking configurations.

Sectional View



Key Features

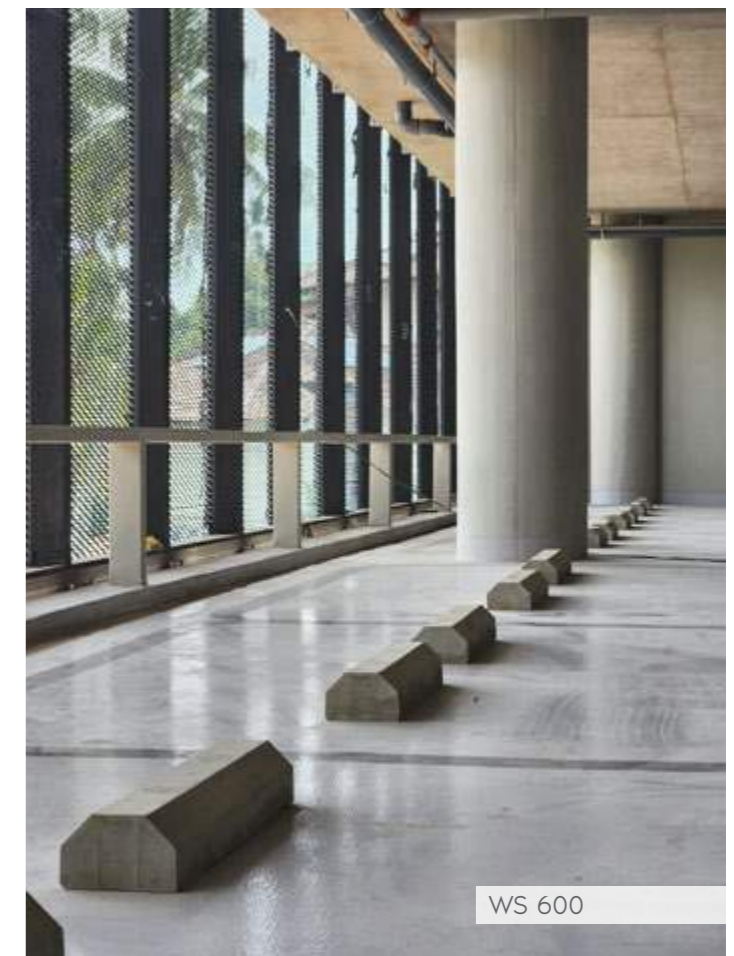
Durability: Made from high-quality concrete and reinforced with two Y10 steel bars, these wheel stoppers are built to withstand repeated vehicle impacts and harsh environmental conditions.

Safety: Designed to prevent vehicles from rolling too far forward, protecting pedestrians, property, and other vehicles.

Reinforcement: The addition of two Y10 steel bars within each stopper ensures enhanced strength and long-term durability.

Versatility: Available in two sizes, making them suitable for different vehicle types and parking layouts.

Ease of Installation: Precast for easy and quick installation, reducing the time and effort needed to secure parking areas.





Concrete Drain Cover

LK 531.5
± 14.5 kg

LK 632.5
± 16.0 kg

LK 532.4
± 11.0 kg

LK 643.10 (LK15)
± 39.0 kg

LK 663.10
± 58.0 kg

LK 7751.10
± 83.0 kg

LK 631.5
± 13.0 kg

LK 641.75
± 33.0 kg

LK 641.5 (LK 13)
± 22.0 kg

Reinforced with Y10 Steel Bars

Supports the concrete and anchors to drain wall

Mild Steel Frame / Galvanized Steel Frame

Length \ Width	300 mm	400 mm	600 mm
500 mm	MS 53.50		
600 mm	MS 63.50	MS 64.50 MS 64.75 MS 64.100	MS 66.50
800 mm			MS 86.50 MS 86.75 MS 86.100

Product Ordering Code: MS 5 3 • 50

MS - Mild steel angle bar with anti rust paint
GV - Galvanized angle bar

LK 663.5
± 35.5 kg



KSC1
(Semi Mountable Channel Kerb)
± 31.0 kg

KSPD1
(Splayed with Opening)
± 50.0 kg

KSP1
(Splayed)
± 55.0 kg



Channel Kerbs & Road Kerbs



☎ 03-3264 8080 / 8686
📞 016-322 0772
✉ sales@pbm.my
🌐 www.pbm.my
📱 @pbm_ventblock



Premier Building Material Sdn. Bhd. (199901012879)
Lot 316, Pasir Tuntung, Api-Api, 45700, Bukit Rotan, Selangor, Malaysia.