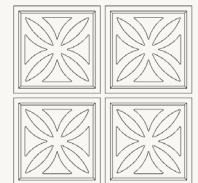
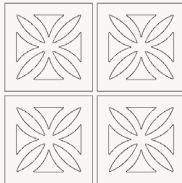
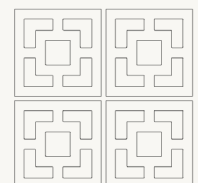
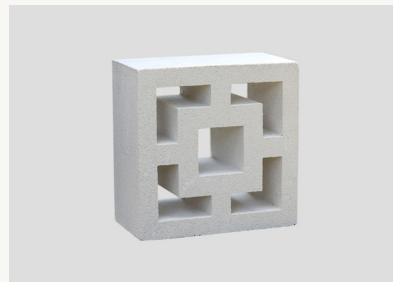
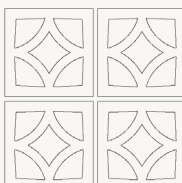
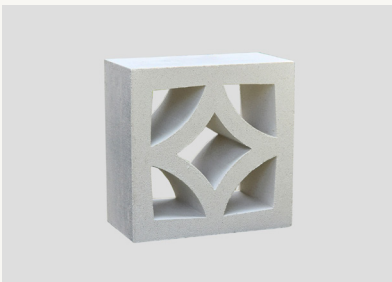


<b>Code</b>	<b>VB+ 801F</b>		<b>VB+ 801F.65</b>
<b>Dimension</b>	(L) 190 x (H) 190 mm		
<b>Depth</b>	100 thk		65 thk
<b>Coverage</b>	25 pcs/m <sup>2</sup>		
<b>Weight</b>	± 5.0 kg/pc		± 3.0 kg/pc
<b>Packaging</b>	180 pcs/plt		280 pcs/plt



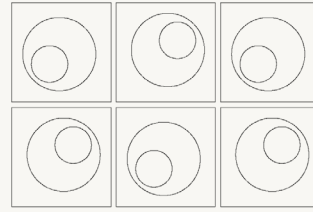
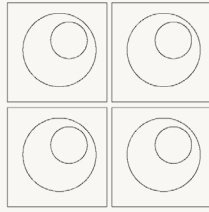
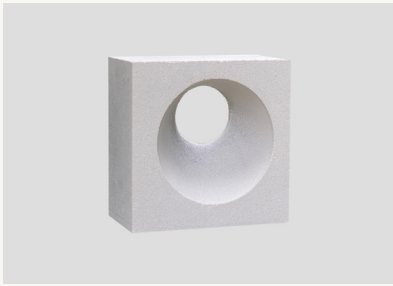
<b>Code</b>	<b>VB+ 802</b>		<b>VB+ 802.65</b>
<b>Dimension</b>	(L) 190 x (H) 190 mm		
<b>Depth</b>	100 thk		65 thk
<b>Coverage</b>	25 pcs/m <sup>2</sup>		
<b>Weight</b>	± 5.4 kg/pc		± 3.2 kg/pc
<b>Packaging</b>	180 pcs/plt		280 pcs/plt

<b>Code</b>	<b>VB+ 802F</b>		<b>VB+ 802F.65</b>
<b>Dimension</b>	(L) 190 x (H) 190 mm		
<b>Depth</b>	100 thk		65 thk
<b>Coverage</b>	25 pcs/m <sup>2</sup>		
<b>Weight</b>	± 5.1 kg/pc		± 3.0 kg/pc
<b>Packaging</b>	180 pcs/plt		280 pcs/plt

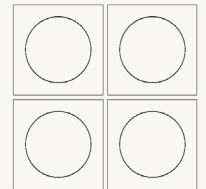
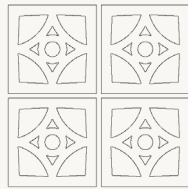
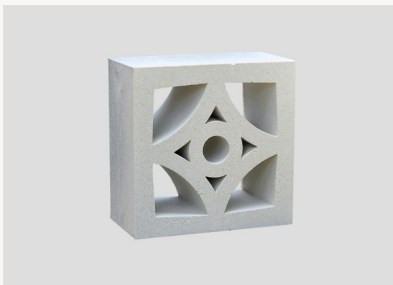


<b>Code</b>	<b>VB+ 803</b>		<b>VB+ 803.65</b>
<b>Dimension</b>	(L) 190 x (H) 190 mm		
<b>Depth</b>	100 thk		65 thk
<b>Coverage</b>	25 pcs/m <sup>2</sup>		
<b>Weight</b>	± 5.0 kg/pc		± 3.0 kg/pc
<b>Packaging</b>	180 pcs/plt		280 pcs/plt

<b>Code</b>	<b>VB+ 804</b>		<b>VB+ 804.65</b>
<b>Dimension</b>	(L) 190 x (H) 190 mm		
<b>Depth</b>	100 thk		65 thk
<b>Coverage</b>	25 pcs/m <sup>2</sup>		
<b>Weight</b>	± 5.0 kg/pc		± 3.0 kg/pc
<b>Packaging</b>	180 pcs/plt		280 pcs/plt

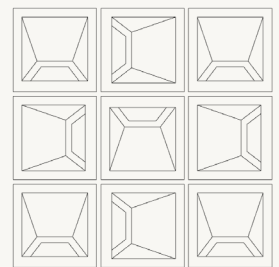
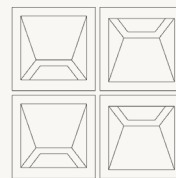
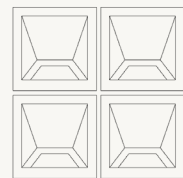


**Code** VB+ 805  
**Dimension** (L) 190 x (H) 190 mm  
**Depth** 100 thk  
**Coverage** 25 pcs/m<sup>2</sup>  
**Weight** ± 5.4 kg/pc  
**Packaging** 180 pcs/plt

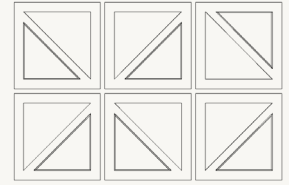
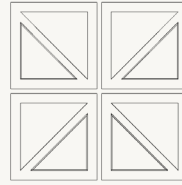
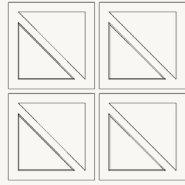


**Code** VB+ 806 | VB+ 806.65  
**Dimension** (L) 190 x (H) 190 mm  
**Depth** 100 thk | 65 thk  
**Coverage** 25 pcs/m<sup>2</sup>  
**Weight** ± 5.4 kg/pc | ± 3.2 kg/pc  
**Packaging** 180 pcs/plt | 280 pcs/plt

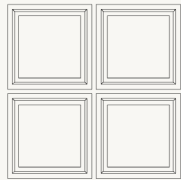
**Code** VB+ 807 | VB+ 807.65  
**Dimension** (L) 190 x (H) 190 mm  
**Depth** 100 thk | 65 thk  
**Coverage** 25 pcs/m<sup>2</sup>  
**Weight** ± 4.4 kg/pc | ± 2.8 kg/pc  
**Packaging** 180 pcs/plt | 280 pcs/plt



**Code** VB+ 808.65  
**Dimension** (L) 190 x (H) 190 mm  
**Depth** 65 thk  
**Coverage** 25 pcs/m<sup>2</sup>  
**Weight** ± 4.0 kg/pc  
**Packaging** 240 pcs/plt



**Code** VB+ 809  
**Dimension** (L) 190 x (H) 190 mm  
**Depth** 100 thk  
**Coverage** 25 pcs/m<sup>2</sup>  
**Weight** ± 4.7 kg/pc  
**Packaging** 180 pcs/plt



<b>Code</b>	<b>VB+ 815F</b>	<b>VB+ 815F.65</b>
<b>Dimension</b>	(L) 190 x (H) 190 mm	
<b>Depth</b>	100 thk	65 thk
<b>Coverage</b>	25 pcs/m <sup>2</sup>	
<b>Weight</b>	± 4.0 kg/pc	± 2.4 kg/pc
<b>Packaging</b>	180 pcs/plt	280 pcs/plt



The VB+ and standard PBM ventilation blocks set themselves apart primarily through their distinct choice of materials, offering contrasting appearances and performance characteristics. PBM VB+, in particular, showcase a pristine and elegant white surface with a smooth texture, exuding a sense of sophistication that seamlessly complements indoor spaces. The careful selection of these materials not only enhances their aesthetic appeal but also contributes to their superior suitability for indoor applications.

 follow us  
 pbm\_ventblock  
 www.pbm.my